



Dream Big Institution
No. 1 Platform For Preparation of Govt Exams



SUPER Quality Mock Test & Quizzes At : Testseries.DreamBigInstitution.com

Our Exam PDF Will Make Your Revision Ease And To Score High Marks As We Highly Recommend You To Follow **Mini Mock Practice Set PDF**

Thanks for choosing **DreamBigInstitution.com** If you like our services, kindly suggest our site DreamBigInstitution.com to all your friends.

Dream Big Institution Launched Brand New **Mobile App & Test Series Portal For Our Harworking Aspirants.**

App name: "**Dream Big Institution**"

- ✓ **500+**Competitive Exams Covered
- ✓ **45000+** Mock Test Series
- ✓ Daily **Free Quizzes** & Current Affairs
- ✓ Available in **Bilingual Languages**
- ✓ Performance **Analysis Tool**
- ✓ Exam Report **Check By Our Educators**
- ✓ Free Gudiance & Many More Available in the App in **Google Play store**.

SUPER Quality Mock Test & Quizzes At : Testseries.DreamBigInstitution.com

Mini Mock Practice PDF for IBPS PO Exams (Set-2)

Level : Easy to Moderate

Mini Mock Practice PDF by – DreamBigInstitution.com

English Section

Here in the questions mentioned below, you will find two statements with one blank each, that must be filled in with the same word. After the statements are five words in five options. You need to choose the most appropriate word which will fill in both the blanks so as to make both the statements grammatically and meaningfully correct

1) I) Anxiety in response to imagined _____ as when you feel everyone is mocking you, is considered a mental health condition.

II) Terrorism is an organized international crime, and the possible acquisition of weapons of mass destruction (WMD) by non-governmental groups are commonly cited as examples of transnational _____

- A. Menacingly
- B. Comminute
- C. Threats
- D. Epitomes
- E. Deterrents

2) I) When you build a strong, purpose-driven culture and focus on making life better for everyone, everywhere, you also create the conditions for your business to _____.

II) Some political parties are not complying with Covid guidelines, they always want to _____ in a crisis.

- A. Prospered
- B. Fosters
- C. Thrive
- D. Tyrannize
- E. Decline

3) I) The forces have to maintain discipline in states; also they have the

SUPER Quality Mock Test & Quizzes At : Testseries.DreamBigInstitution.com

responsibility to see to it that the party remains a _____ force.

II) The music company will work in a very collaborative manner with the other companies as they are committed to build a _____ synergetic environment of all Indian companies growing together.

- A.Cohesive**
- B.Solidarity**
- C.Concurrent**
- D.Unravelling**
- E.Elucidated**

In each of the following questions two sentences are given with a blank in each. You are required to fill these blanks with the same word from the options in order to form meaningful and coherent sentences.

4) Monika is a very efficient nurse, but her patients find her bedside manner to be _____ and unpleasant.

Seeta admits that she wakes up _____ every morning, but her mood

improves _____ drastically _____ after she having her cup of tea.

- A.Pious**
- B.Inimical**
- C.Churlish**
- D.Flimsy**
- E.None of the above**

5) Since Henry didn't study or attend the class on a regular basis, it was simply a _____ that he passed the final examination.

Winning the lottery is always a _____ due to buying the lucky ticket completely by chance.

- A.fluke**
- B.prolific**
- C.condemn**
- D.pristine**
- E.None of the above**

SUPER Quality Mock Test & Quizzes At : Testseries.DreamBigInstitution.com

Answers

1) Answer: C

Let's first understand the meanings of each word given as options.

Menacingly (Verb): in a way of suggesting the presence of danger or threatening.

Comminute (Verb): to reduce to minute particles

Threats (noun): a statement of an intention to inflict pain, injury, damage, or other hostile action on someone in retribution for something done or not done.

Epitomes (noun): a person or thing that is a perfect example of a particular quality or type.

Deterrents (Adjective): a thing that discourages or is intended to discourage someone from doing something.

Epitomes and Deterrents are contextually weak choices.

Menacingly and Comminute are grammatically incorrect and do not fit in with the sentence structure.

Only 'threats' fits in well

Hence, option C is correct.

2) Answer: C

Let's first understand the meanings of each word given as options.

Prospered (Verb): (of something unexpected) cause (someone) to feel mild astonishment or shock.

Fosters (Verb): cause (someone) to feel concern and distress.

Thrive (Verb): cause (someone) to feel very enthusiastic and eager.

SUPER Quality Mock Test & Quizzes At : Testseries.DreamBigInstitution.com

Tyrannize (Verb): make (someone) troubled or nervous.

Decline (verb): very surprising, astonishing, or remarkable.

Tyrannize and decline can be eliminated as they do not fit as per the context.

Prospered and fosters are both grammatically incorrect and do not fit in with the sentence structure.

Only thrive fits in well.

Hence, option C is correct.

3) Answer: A

Let's first understand the meanings of each word given as options.

Cohesive (Adjective): forming a united whole.

Solidarity (noun): unity or agreement of feeling or action, especially among individuals with a common interest; mutual support within a group.

Concurrent (Adjective): existing, happening, or done at the same time.

Unravelling (verb): investigate and solve or explain (something complicated or puzzling).

Elucidated (verb): cleared or well explained.

Unravelling and Elucidated are unfit contextually as well. Solidarity is grammatically incorrect while concurrent is a weak choice as per the context.

Only cohesive fits in well.

Hence, option A is correct.

4) Answer: C

SUPER Quality Mock Test & Quizzes At : Testseries.DreamBigInstitution.com

The word which fits perfectly in both the blanks is “churlish” which means “rude, ill-mannered, impolite”, remaining words are inapt for the given blank.

Flimsy- light, fragile

Inimical- harmful, injurious

Pious- religious, devoted

Hence the correct option is C

5) Answer: A

The word which suits perfectly in both the blanks is “fluke” which means “achieve (something) by luck rather than skill.” Remaining words are inapt for the given blank.

Prolific- plentiful, present in a large quantity

Condemn- express complete disapproval of

Pristine- in its original condition; unspoilt; pure

Hence the correct option is A

Reasoning Section

In each question below is given a group of elements followed by four combination of elements numbered (1), (2), (3) and (4). You have to find out which of the combination correctly represents the group of elements based on the following coding system and condition that follow and mark the number of that combination as your answer. If the group of elements does not follow the coding system then give the answer (5) as 'None of these'.

SUPER Quality Mock Test & Quizzes At : Testseries.DreamBigInstitution.com

Letters/Symbol:- A % B # C © D @ E \$ F δ G

Digit :- 1 2 3 4 5 6 7 8 9 0 (11) (12) (13)

Conditions -

(I) If in the group of letters, there is no vowel then third and fifth letter's code are to be interchanged.

(II) If the second digit is even and fourth digit is odd then both are to be coded from the previous element code.

(III) If the first and last element is a symbol then both are to be coded from the code of 'E'.

Q.1. C D B F G

- (1) 75(13)(11)3
- (2) 57(13)(11)3
- (3) 57(11)(13)3
- (4) 357(13)(11)
- (5) None of these

Q.2. 1 8 7 9 2

- (1) ADAD%
- (2) ADDA%
- (3) %ADDA

SUPER Quality Mock Test & Quizzes At : Testseries.DreamBigInstitution.com

(4) AADD%

(5) None of these

Q.3. \$ 2 A F #

(1) 9%19(11)

(2) %91(11)9

(3) 9%1(11)9

(4) 99%1(11)

(5) None of these

Q.4. 2 D 7 A G

(1) %7D1(13)

(2) 7%D1(13)

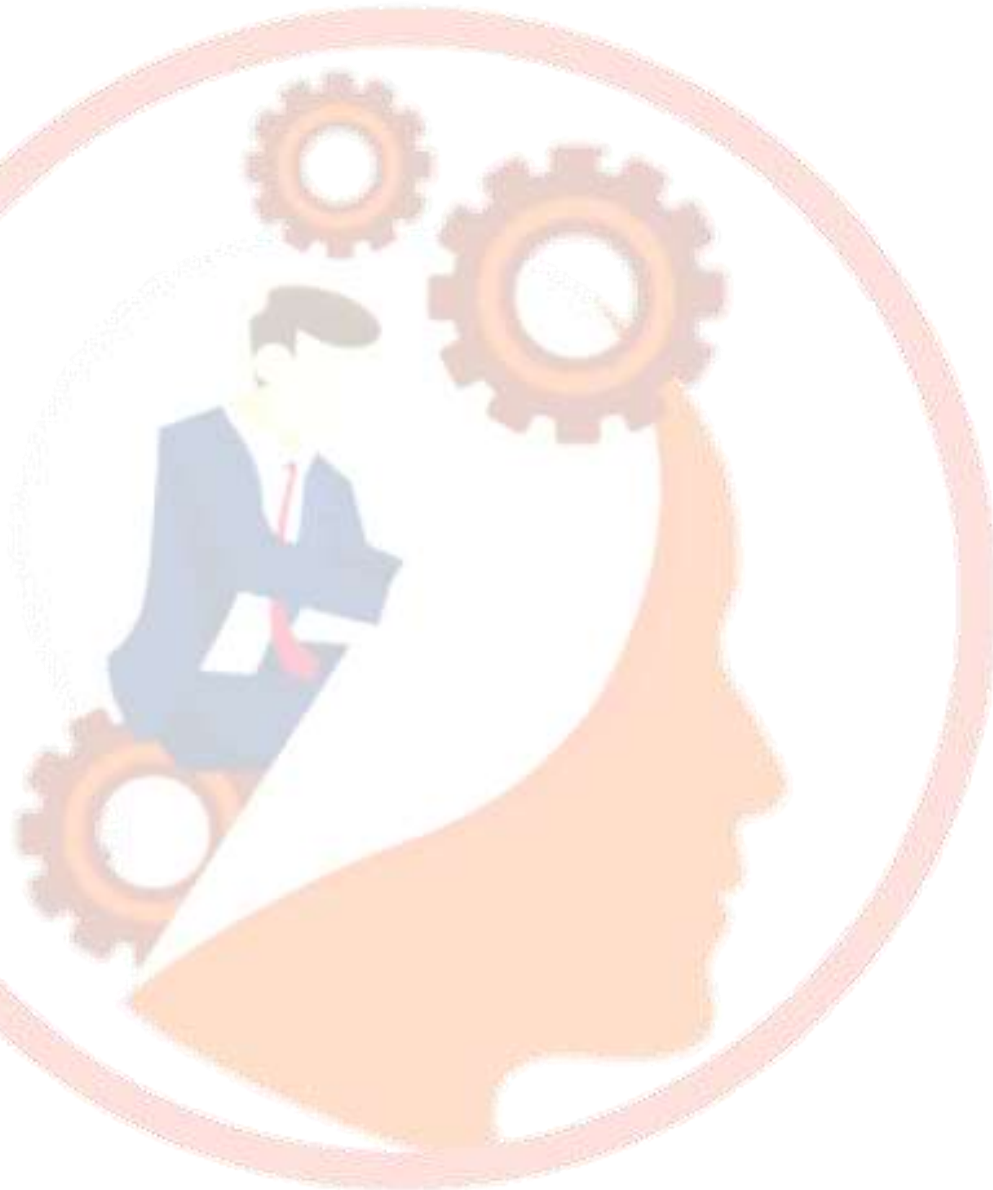
(3) D17%(13)

(4) (13)D17%

(5) None of these

Q.5. δ # % E 7

(1) (12) 492D





Dream Big Institution
No. 1 Platform For Preparation of Govt Exams



Join us on
Telegram

SUPER Quality Mock Test & Quizzes At : Testseries.DreamBigInstitution.com

(2) (12)429D

(3) (12)942D

(4) (12)D924

(5) None of these

Answer

Q.1. (2)

C D B F G-57(13)(11)3 - Condition (I) follows

Q.2. (4)

1 8 7 9 2-A A D D %- Condition (II) follows

Q.3. (3)

\$ 2 A F #- 9 %1(11)9 - Condition (III) follows

Q.4. (1)

2 D 7 A G - %7 D 1 (13)

Q.5. (2)

δ # % E 7-(12)4 2 9 D



Dream Big Institution
No. 1 Platform For Preparation of Govt Exams



Join us on
Telegram

SUPER Quality Mock Test & Quizzes At : Testseries.DreamBigInstitution.com

Quantitative Aptitude Section

What value should come in the place of (?) in the following number series?

1) 4, 10, 33, 136, ?, 4116

C.103

A.680

D.105

B.685

E.115

C.720

4) 88, 165, 220, 253, ?

D.785

A.261

E.815

B.258

2) 1944, 968, 480, 236, 114, ?

C.264

A.53

D.268

B.60

E.270

C.65

5) 85, 110, 94, 103, 99, ?

D.70

A.20

E.49

B.60

3) 35, 49, 63, 77, 91, ?

C.80

A.100

D.100

B.102

E.110



Dream Big Institution
No. 1 Platform For Preparation of Govt Exams



Join us on
Telegram

SUPER Quality Mock Test & Quizzes At : Testseries.DreamBigInstitution.com

Answers :

1) Answer: B

$$4 * 2 + 2 = 10$$

$$10 * 3 + 3 = 33$$

$$33 * 4 + 4 = 136$$

$$136 * 5 + 5 = \mathbf{685}$$

$$685 * 6 + 6 = 4116$$

2) Answer: A

$$1944/2 - 4 = 968$$

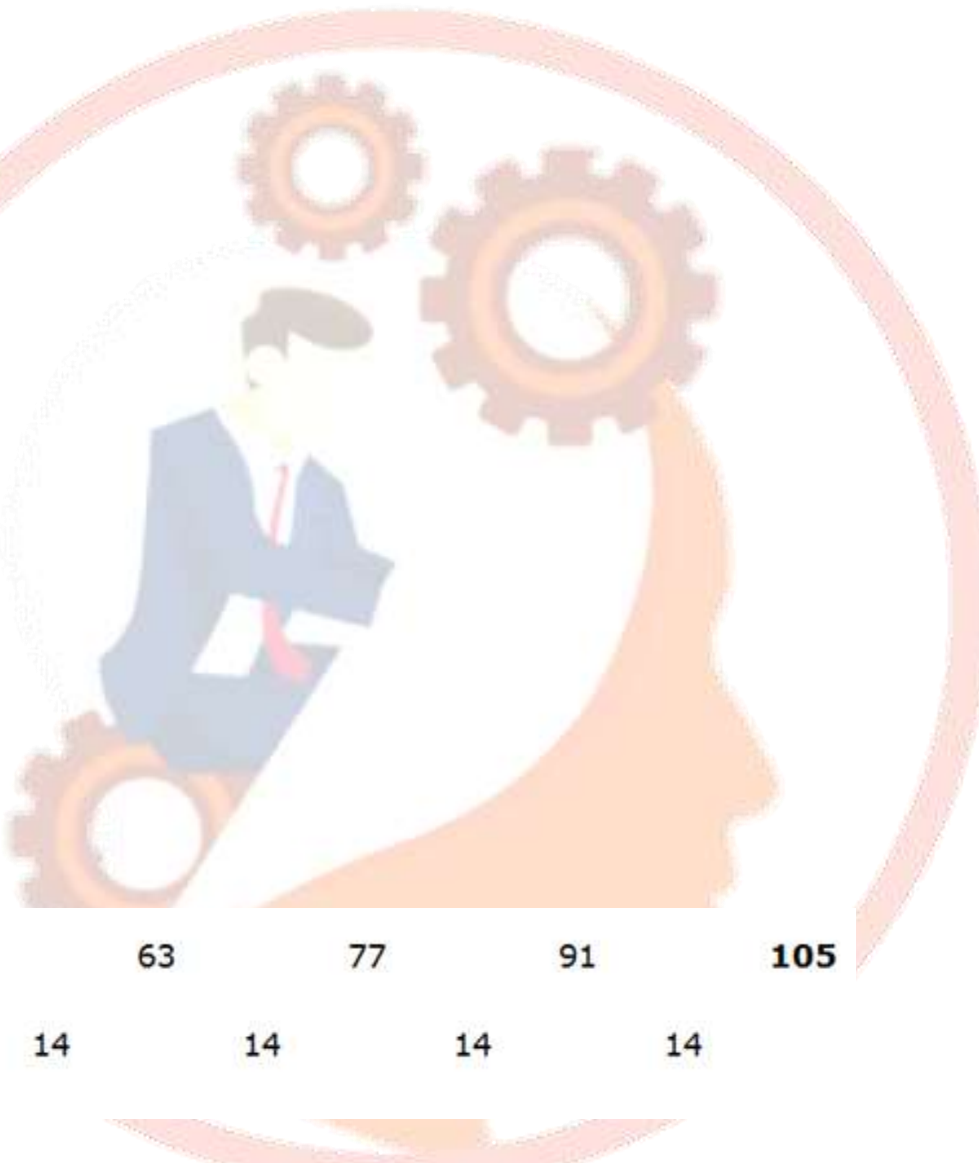
$$968/2 - 4 = 480$$

$$480/2 - 4 = 236$$

$$236/2 - 4 = 114$$

$$114/2 - 4 = \mathbf{53}$$

3) Answer: D



35	49	63	77	91	105
14	14	14	14	14	

4) Answer: C

$$88 + 77 = 165$$



Dream Big Institution
No. 1 Platform For Preparation of Govt Exams



Join us on
Telegram

SUPER Quality Mock Test & Quizzes At : Testseries.DreamBigInstitution.com

$$165 + 55 = 220$$

$$220 + 33 = 253$$

$$253 + 11 = \mathbf{264}$$

5) Answer: D

$$85 + 5^2 = 110$$

$$110 - 4^2 = 94$$

$$94 + 3^2 = 103$$

$$103 - 2^2 = 99$$

$$99 + 1^2 = \mathbf{100}$$

All the Best for Your Exams!!!

Suggestions & Feedback are welcomed

DreamBigInstitution@gmail.com